



# MASONS

Designed Smart, Built Tough.

## Roofing Supplies

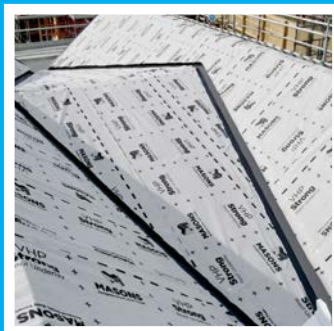
TRADE ISSUE | VOLUME 2

Passive Roof Ventilation System P.1

VHP Roof Underlay P.4

White-Faced Foil P.7

Roof Boot Flashings P.8



MASONS  
Designed Smart, Built Tough.



# The Masons Story

We're Masons – a New Zealand owned family business that's been part of the building industry for more than 25 years. We develop products and systems that help buildings perform at their best.

Masons was built from practical experience. Trent Mason learned the trade in a bricklaying family, where doing the job properly mattered – a mindset Masons still brings to the building site today.

We focus on the complete building envelope: wraps, air barriers, fixings, tapes, cladding elements – everything works better when it works as a system. Our goal is to reduce risk and remove guesswork so buildings perform the way they should.

Over the years we've become known as trusted problem-solvers – the people you call when you want something explained clearly, when you need to understand how components connect, or simply want confidence you're making the right call.

**OVER 25 YEARS IN THE INDUSTRY**

We understand the building sector

**WE BACK OUR PRODUCTS**

Support is only a phone call away

**COMPLIANCE**

Testing literature reviewed by professionals

**MASONS REPS**

A team of experts nationwide

For more information on any Masons product, visit [mpb.co.nz](http://mpb.co.nz) or call 0800 522 533 to speak with one of the team.



# Passive Roof Ventilation System

Regulates roof space temperature and reduces condensation



## VENTILATION BUILT-IN

Ensures air enters at the eaves and exits at the ridge



## HEALTHIER ROOF

A drier, cooler roof space and longer roof life



**PREVENTS MOISTURE BUILD UP** and mould growth



**VERSATILE** Suits various roof types

**The improved weather and air tightness of modern roof cladding and flashings contribute to warm, dry and healthy homes. But, the reduced airflow in the roof attic space can create a hidden problem – excess moisture and condensation in the roof space.**

Without adequate ventilation, moisture builds up, creating the perfect conditions for mould growth. Good roof space ventilation is crucial in preventing this.

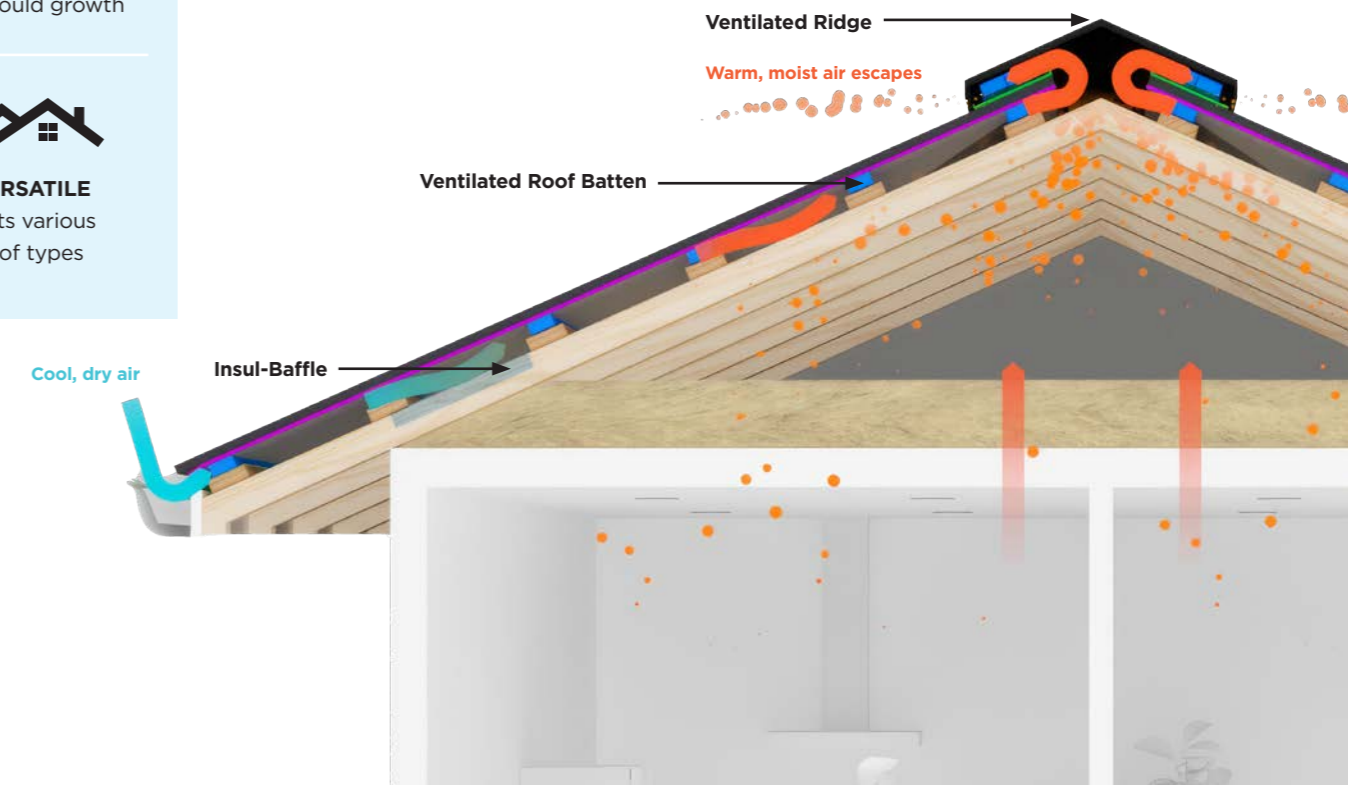
Masons Passive Roof Ventilation System is a complete system for ventilating roof cavities in long run metal roofs. Using the natural stack effect and wind movement, this passive system helps remove warm, moist air and introduces cooler, drier air to protect the roof structure, insulation, and ceiling space from moisture-related damage.

## THE SYSTEM HAS THREE COMPONENTS:

**INSUL-BAFFLE** to preserve a clear air path near the eaves

**VENTILATED ROOF BATTENS** to create airflow under the roofing

**ROOF VENTS** at the ridge to let warm air escape





## MASONS PRODUCTS MAXIMISE AIRFLOW TO REDUCE CONDENSATION

**In some regions condensation risks are higher, such as in areas of cold or high humidity.**

Extra care needs to be taken in specifying the correct design and installation practices, as well as building ventilation systems to prevent excessive condensation and moisture in the roof spaces.

Always refer to the latest version of the MRM Code of Practice for the latest best practise in design and installation details. See MRM Code of Practice – Ventilation.

### Factors that influence excessive condensation forming in roofing systems:

- Humid and/or cold climatic regions
- Warm/skillion roof construction (require attention in design and construction)
- Low roof cavity air volume and restricted air movement
- Lack of a vapour control layer (if applicable)
- Low pitched roof or bulk insulation
- Penetrations in the ceiling or warm air entering the roof space
- Activities within the building which create high moisture loading
- High levels of construction moisture such as concrete slab curing

NB: Masons recommends passive ventilation be included in the buildings design to eliminate excess condensation.



## VENTILATED ROOF BATTENS

Masons ventilated roof battens create an effective ventilation cavity under roofing to encourage airflow and moisture escape. Made from tough, non-absorbent polypropylene with an easy peel-off adhesive strip, they help keep roof spaces dry and protect insulation and framing.

Available in two sizes: 11mm and 18mm thicknesses.

### EASE OF PLACEMENT

With self-adhesive strip.

### STRONG AND DURABLE

Cellular structure prevents capillary action and thermal bridging. Their high compressive strength makes them effective packers.

Description	Size	Masons Code
Ventilated Roof Battens - Plastic - <b>50 to a box</b>	45x11x1800mm	BATNVENTRF45x11x1800
Ventilated Roof and Wall Battens - Plastic - <b>25 to a box</b>	45x18x1800mm	BATNVENT45x18x1800



## INSUL-BAFFLE

For even better airflow, Masons Insul-Baffle ensures the vital 25mm gap between insulation and roof underlay is maintained.

Made from durable, clear plastic, Insul-Baffle is fitted under the eaves, preventing bulk insulation from pressing up against the roof underlay. Installed along the full length of the eaves, its unique 'Dragon Channels' add rigidity while promoting cross-ventilation.

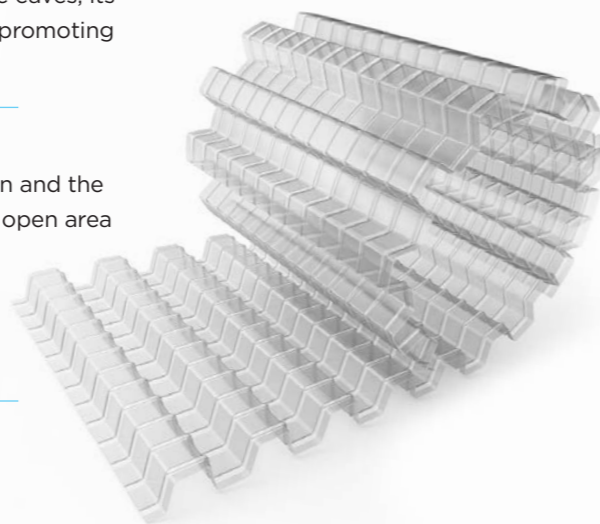
### MAINTAINS AIR GAP

A minimum 25mm air gap between insulation and the roof underlay is required. This equates to an open area of 25,000mm<sup>2</sup> per Lm.

Masons Insul-Baffle meets this requirement. It prevents insulation from blocking airflow and enhances passive ventilation.

### VERSATILE

Suits any roof type, material, or pitch.



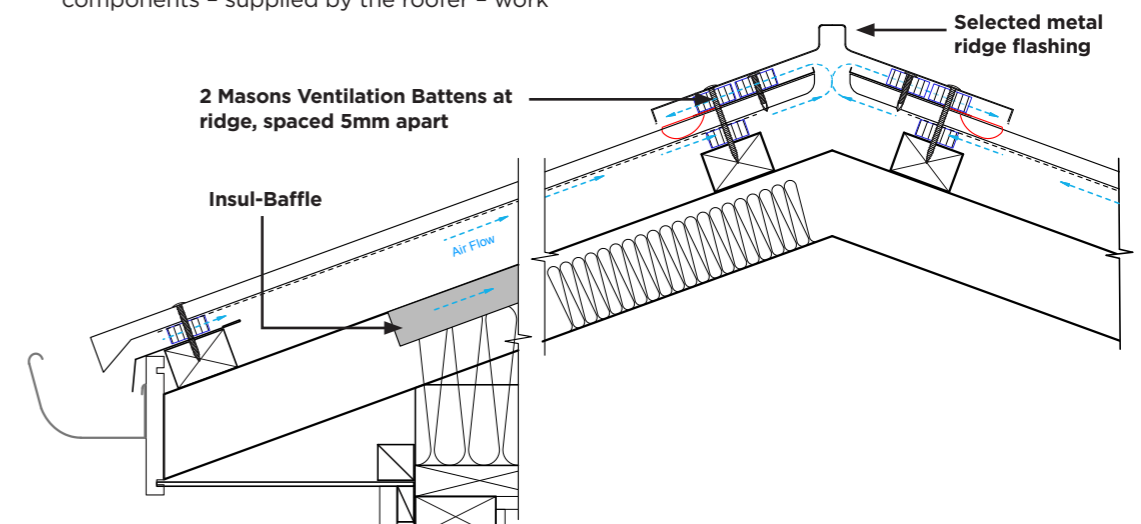
Description	Size	Masons Code
Insul-Baffle separator - <b>2 pack box</b>	45mm x 650mm x 6Lm	BFFL.5X650x6

## ROOF VENTS

At the ridge, ventilation is achieved by using Masons Ventilated Roof Battens combined with an under-flashing, as detailed in Masons' technical documentation.

The eaves are similarly ventilated, using the same ventilated battens together with an eave flashing sized to suit both the roof pitch and the required airflow gap. These components – supplied by the roofer – work

together to establish a continuous natural airflow from eaves to ridge. This ventilation path plays a crucial role in regulating temperature and humidity within the roof space, helping to prevent condensation, reduce heat build-up, and maintain the long-term performance of the roof assembly.



# VHP Roof Underlay

Very high vapour permeability, tough, self-supporting, synthetic underlay



<b>STRONG NON-WOVEN SUBSTRATE</b> Available as light, medium, heavy and extra heavy weight	<b>SELF SUPPORTING</b>
<b>VERY HIGH VAPOUR PERMEABILITY</b> Assists in the control of moisture	<b>FIRE RETARDANT*</b>
<b>UV RESISTANT</b> Up to 21 days exposure	<b>TEAR RESISTANT</b> Tough

## WHY CHOOSE MASONS VHP ROOF UNDERLAY?

Masons VHP Roof Underlays are synthetic, strong, self-supporting membranes designed to help manage moisture in roof cavities. They allow water vapour to escape, supporting condensation control and long-term roof performance.

### MOISTURE SMART

Highly breathable premium roof underlays for their weight, having the ability to transfer water vapour at higher rates than traditional bitumen impregnated kraft paper (black paper). This is helpful in the control of condensation.

### VALUE FOR MONEY

Masons VHP Roof Underlay offers value for money, especially VHP Value.

### STRONG AND SELF-SUPPORTING

Designed to span between supports for easier install and durability.

### FIRE RETARDANT OPTIONS

Performing well in rigorous testing to pass NZ/AS1530 part 2 FI <5. VHP Maxi, Ultra and Strong are fire retardant; VHP Value is not.

### UV EXPOSURE

All our underlays give weather protection during construction and UV resistance for 21 days. Same day cover for roofing is best practice and highly recommended.

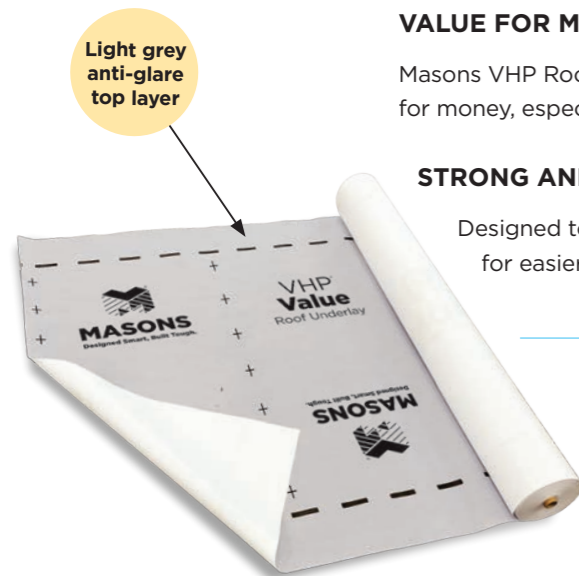
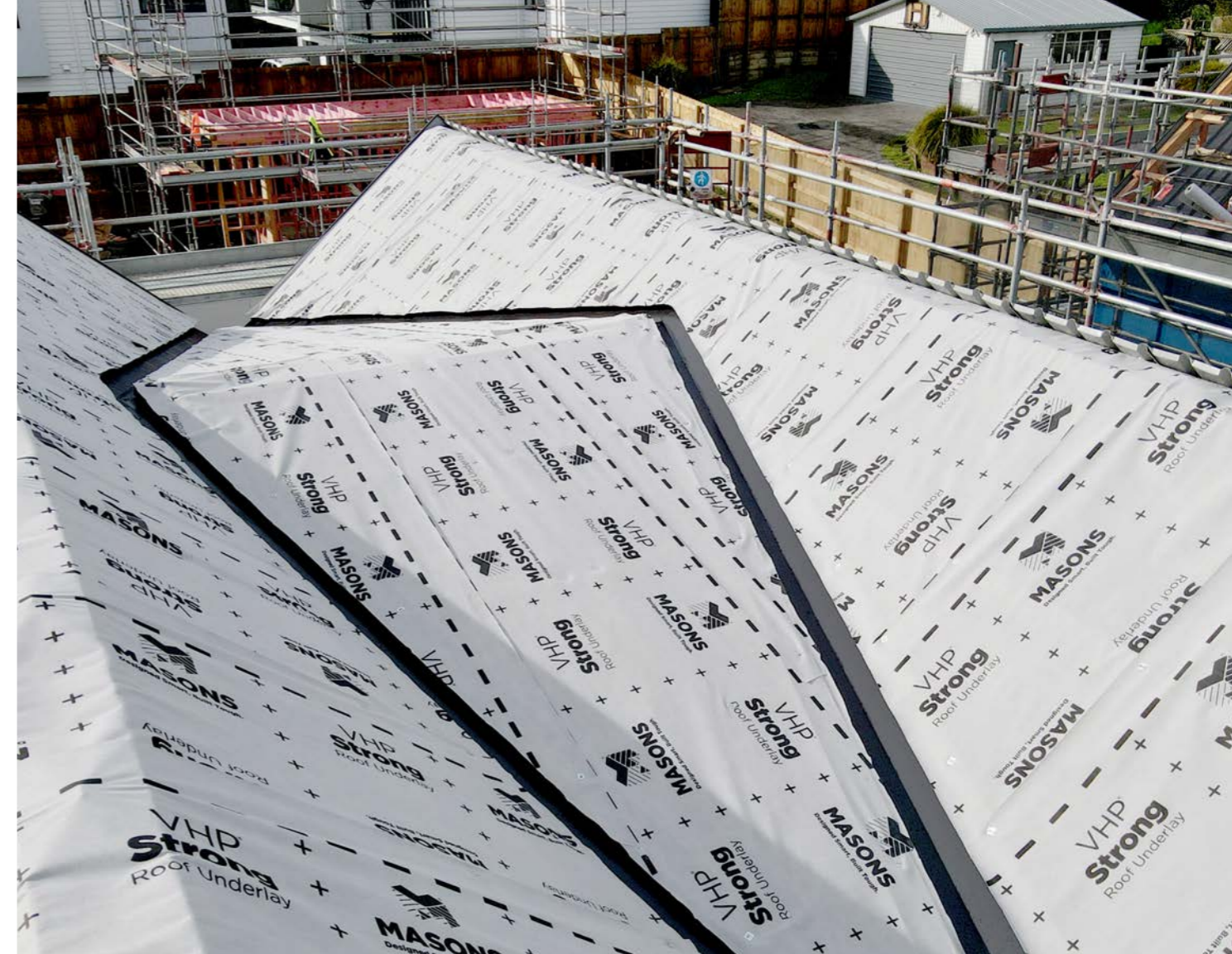
Not suitable for use in unlined buildings.



All Masons VHP Roof Underlays are CodeMark certified.

Visit [tepae.building.govt.nz/public-registers](http://tepae.building.govt.nz/public-registers) for latest information.

\*Fire retardant: VHP Maxi, Ultra and Strong. VHP Value is not fire retardant.



## CHOOSE THE CORRECT VHP ROOF UNDERLAY FOR YOUR BUILD

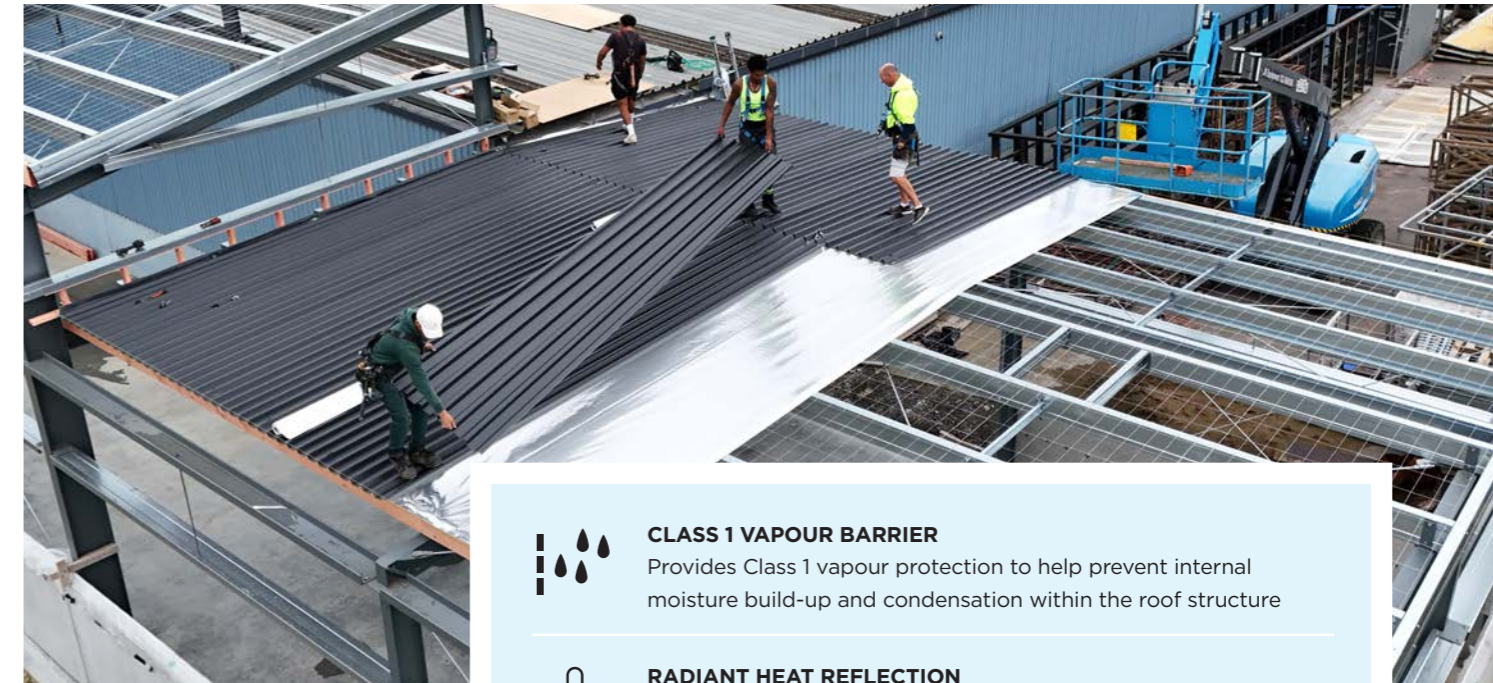
	VHP® MAXI	VHP® ULTRA
<b>Benefits</b>	Very high performance, top of the range, fire retardant	High performance, tear resistant, fire retardant
<b>Roll Size (1.25m wide)</b>	1.25m x 40m = 50m <sup>2</sup>	1.25m x 40m = 50m <sup>2</sup>
<b>Roll Size (1.45m wide)</b>	1.45m x 34.48m = 50m <sup>2</sup>	1.45m x 34.48m = 50m <sup>2</sup>
<b>Weight</b>	Extra Heavy	Heavy
<b>Substrate Colour</b>	Light grey/white	Light grey/white

	VHP® STRONG	VHP® VALUE
<b>Benefits</b>	High performance, tear resistant, fire retardant	Economy price. A huge upgrade from Bituminous Paper.
<b>NEW SIZE</b> Roll Size (0.5m wide)	0.5 x 30 = 15m <sup>2</sup>	-
<b>Roll Size (1.25m wide)</b>	1.25m x 40m = 50m <sup>2</sup> 1.25m x 60m = 75m <sup>2</sup>	1.25m x 40m = 50m <sup>2</sup> or 1.25m x 80m = 100m <sup>2</sup>
<b>Roll Size (1.45m wide)</b>	1.45m x 51.7m = 75m <sup>2</sup>	1.5m x 66.6m = 100m <sup>2</sup>
<b>Roll Size (2.74m wide)</b>	2.74m x 29.19 = 80m <sup>2</sup>	-
<b>NEW SIZE</b> Roll Size (3.0m wide)	3.0m x 33.33 = 100m <sup>2</sup>	
<b>Weight</b>	Medium	Light
<b>Substrate Colour</b>	Light grey front/white back	Light grey front/white back



# White-Faced Foil

Composite underlay for commercial & industrial interiors



## TESTING

Masons VHP Roof Underlays have been tested to the requirements set out in NZS2295:2006 Visit [tepaebuilding.govt.nz/public-registers](http://tepaebuilding.govt.nz/public-registers) for the latest information.

	VHP MAXI	VHP ULTRA	VHP STRONG	VHP VALUE
<b>Absorbency &gt;150 g/m<sup>2</sup></b>	Pass	Pass	Pass	Pass
<b>R.W.V.T &lt;.5 MN s/g</b>	Pass	Pass	Pass	Pass
<b>R.W.Penetration &gt; 100mm</b>	Pass	Pass	Pass	Pass
<b>Mechanical strength R4 S.S</b>	Pass	Pass	Pass	Pass
<b>Self Supporting</b>	Yes	Yes	Yes	Pass
<b>Flammability index of &lt;5</b>	Pass	Pass	Pass	N/A
<b>UV exposure - Days</b>	21	21	21	21
<b>PH of Extract &gt;5.5-8&lt;</b>	Pass	Pass	Pass	Pass

### Durability and Performance standards\*

Meets the Performance Requirements of NZBC Clauses B2, Durability (B2.3.1 (a) 50 years, B2.3.1 (b) 15 years and B2.3.2), C3 Fire affecting areas beyond the fire source. C3.4 (c) E2 External Moisture, and F2 Hazardous Building Materials F2.3.1/C, providing:

- Is installed in accordance with instructions and is not damaged.
- Is suitable for the cladding system used.
- Is not left exposed for more than 21 days. Same day coverage is strongly recommended.
- Is installed by, or under supervision/guidance of a Licensed Building Practitioner (LPB).
- Tested to and meets or exceeds requirements of NZS2295.

### Flammability Index

Masons VHP Strong, Ultra and Maxi Roof Underlays have a NZ/AS1530 Part 2 Flammability Index of <5. VHP Value is not fire retardant.

Description	Roll Size	Masons Code
VHP Maxi Roof Underlay (extra heavy weight)	1.25 x 40 = 50m <sup>2</sup>	RVHPMAXI1.25X50
VHP Maxi Roof Underlay (extra heavy weight)	1.45 x 34.48 = 50m <sup>2</sup>	ROOFVHPMAXI
VHP Ultra Roof Underlay (heavy weight)	1.25 x 40 = 50m <sup>2</sup>	RVHPULTRA1.25X50
VHP Ultra Roof Underlay (heavy weight)	1.45 x 34.48 = 50m <sup>2</sup>	ROOFVHPULTRA
<b>NEW SIZE</b> VHP Strong Roof Underlay (medium weight)	0.5 x 30 = 15m <sup>2</sup>	RVHPSTRONG500
VHP Strong Roof Underlay (medium weight)	1.25 x 40 = 50m <sup>2</sup>	RVHPSTRONG1.25X50
VHP Strong Roof Underlay (medium weight)	1.45 x 51.7 = 75m <sup>2</sup>	ROOFVHPSTRONG
<b>NEW SIZE</b> VHP Strong Roof Underlay (medium weight)	3.0 x 33.33 = 100m <sup>2</sup>	RVHPSTRONG3.0x100
VHP Value Roof Underlay (light weight)	1.25 x 40 = 50m <sup>2</sup>	RVHPVALUE1.25X50
VHP Value Roof Underlay (light weight)	1.25 x 80 = 100m <sup>2</sup>	RVHPVALUE1.25X100
VHP Value Roof Underlay (light weight)	1.5 x 66.6 = 100m <sup>2</sup>	ROOFVHPVALUE



### CLASS 1 VAPOUR BARRIER

Provides Class 1 vapour protection to help prevent internal moisture build-up and condensation within the roof structure



### RADIANT HEAT REFLECTION

The reflective foil surface reduces radiant heat transfer, supporting improved thermal performance in commercial roof builds



### BRIGHTER INTERIORS

The white finish enhances light reflectivity inside warehouses, workshops and industrial spaces - reducing the need for additional lighting and improving overall presentation



### COMMERCIAL-GRADE DURABILITY

Synthetic composite construction designed to perform in demanding roofing applications

Masons White-Faced Foil is a high-performance synthetic and aluminium composite underlay designed for commercial and industrial buildings where vapour control and a clean internal finish matter.

Installed with the white reflective surface facing the interior, it delivers reliable moisture protection while creating a brighter, more professional internal environment.

### IDEAL FOR:

- Warehouses
- Workshops
- Industrial buildings
- Commercial sheds
- Agricultural buildings

Anywhere a vapour barrier is required and the underside of the roof remains visible.

Description	Size	Masons Code
White-Faced Foil Roll	1.35m x 56m=75.6m <sup>2</sup>	FOIL1.35MX75



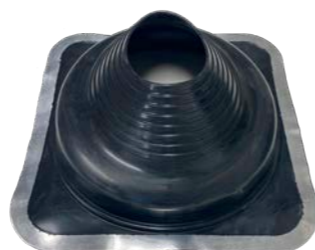
# Roof Boot Flashings

Weathertight flashings between the service pipe and roof



Masons Roof Boot flashings provide a durable, flexible and weathertight seal between service pipes and roofing materials - protecting the building envelope.

Made from high-performance EPDM rubber, these flashings flex with movement and maintain a tight seal over time.



#### WEATHERTIGHT PERFORMANCE

Creates a secure seal between pipe and roof cladding to help prevent leaks around penetrations

#### EASY TO INSTALL

Flexible base moulds to roof profiles for a fast, easy installation on metal roofing

#### HIGH PERFORMANCE EPDM RUBBER

Suitable for NZ's varied climate and demanding roof environments

#### ALSO FOR FLASHING PIPES OWN HORIZONTAL CLADDING

Description	Pipe Size (mm)	Base Size (mm)	Masons Code
Roof Boot Flshg 0-20mm Blk EPDM	0-20	57x57	RBFBE 0-20MM
Roof Boot Flshg 0-35mm Blk EPDM	0-35	100x100	RBFBE 0-35MM
Roof Boot Flshg 110-170mm Blk EPDM	110-170	283x283	RBFBE 110-170MM
Roof Boot Flshg 130-230mm Blk EPDM	130-230	305x305	RBFBE 130-230mm
Roof Boot Flshg 160-220mm Blk EPDM	160-220	360x360	RBFBE 160-220MM
Roof Boot Flshg 160-300mm Blk EPDM	160-300	445x445	RBFBE 160-300MM
Roof Boot Flshg 5-120mm Blk EPDM	5-120	215x215	RBFBE 5-120MM
Roof Boot Flshg 5-55mm Blk EPDM	5-55	135x135	RBFBE 5-55MM
Roof Boot Flshg 50-70mm Blk EPDM	50-70	175x175	RBFBE 50-70MM
Roof Boot Flshg 0-35mm Blk EPDM Cble Nipples	0-35	92x92	RBFBECN 0-35MM
Roof Boot Flshg 20-70mm Blk EPDM Retro Fit	20-70	160x160	RBFBERF 20-70MM

#### SUITABLE FOR:

- Metal roofing penetrations
- Round and square service pipes
- Retrofit applications
- Horizontal cladding pipe flashings



**MASONS**  
Designed Smart, Built Tough.



**mpb.co.nz**

Your 24/7 resource for:

Installation Guides

Specification Documentation

Compliance Documentation

Brochures

CAD Drawings

Case Studies

Expert Articles

## THE MASONS PODCAST

The Masons Podcast explores the products, systems, and ideas shaping better building in New Zealand. Check it out on your favourite podcast platform.





# MASONS

Designed Smart, Built Tough.



Visit: [mpb.co.nz](http://mpb.co.nz)

Phone: **0800 522 533**

Email: [info@mpb.co.nz](mailto:info@mpb.co.nz)